

REACHing Out

HELPING PEOPLE WITH DISABILITIES REACH FOR INDEPENDENCE

December 2011 - February 2012 Vol. XIV. No. 4 Editor: Becky S. Teal

REACHing Out is published four times a year in December, March, June, & September at REACH of Dallas, 8625 King George Drive, Suite 210, Dallas, Texas 75235-2275

Calendar of Events-Fort Worth	2
Calendar of Events-Dallas	3
Calendar of Events-Denton	4
Calendar of Events-Plano	5
From The Director's Desk	6
Gov. Perry Makes Appointments	6
FYI with Paula	7
REACH's Housing Corner	7
Advanced Mobility Ad	8
Adaptive Mobility of/SW Ad	8
REACH FYI on the Move	9
Bad Weather Closing Information	9
Total Access Designs Ad	10
People with Disabilities Wanted	10
Lift Aids Ad	11
Just A Reminder	11
United Access Ad	12
Newsletter Ad Rates	12
Attendant & Caregiver Manuals Ad	13
Choice Medical Ad	13
REACH Veterans Outreach Services	14
We Are People Too Poem	14
Web World	15
Care to Help	15

REACH of Fort Worth has moved!



**The REACH of Fort Worth Resource
Center on Independent Living
is now located at
1000 Macon Street , Suite 200
Fort Worth, TX 76102-4527
817-870-9082**

CALENDAR OF EVENTS



Call us if you need any accommodations such as a sign language interpreter, Braille materials, etc.

December 2011

- 1 Genghis Grill the Mongolian Stir Fry, 4469 Bryant Irvin Road. Bring \$20.00 which includes your meal and a tip for the chef. 1:00-2:30 PM
- 7 Adjustment to Disability Training @ the center 10:00-11:00 AM
- 8 Bowling at Brunswick, 3025 Alta Mesa Blvd. Bring \$3.25 for a game and shoes and extra money for the snack bar. 1:00-3:00 PM
- 14 Adjustment to Disability Training @ the center 10:00-11:00 AM
- 15 Craft Day @ the center. Bring individually wrapped candy and \$10.00 to prepay for your lunch at the Dec. 22 Christmas party. 1:00-3:00 PM
- 21 Adjustment to Disability Training @ the center 10:00-11:00 AM
- 22 Christmas Party @ the center. Bring a gift to exchange for either a man or woman. Lunch will be served. Make sure to prepay your \$10.00 on Dec. 15. 1:00-3:00 PM
- 26-30 Center closed for Christmas Holiday.



January 2012

- 2 Office Closed (New Year's Holiday)
- 4 Adjustment to Disability Training @ the center 10:00-11:00 AM
- 5 CiCi's Pizza, 2724 8th Ave. Cost is \$10.00 which includes a large drink. 1:00 PM-2:30 PM
- 11 Adjustment to Disability Training @ the center 10:00-11:00 AM
- 12 Movie Tavern, West 7th Street-2872 Crockett Street. Cost is \$10.00 for movie and bring extra money for popcorn and a beverage or lunch. Please call the center on Wednesday for time and movie title.
- 16 Center closed (Martin Luther King, Jr.'s Birthday)
- 18 Adjustment to Disability Training @ the center 10:00-11:00 AM
- 19 Game Day @ the center 1:00-3:00 PM
- 25 Adjustment to Disability Training @ the center 10:00-11:00 AM
- 26 Movie Day @ the center. Red Box Movie. Popcorn & drinks will be provided. 1:00-3:00 PM



February 2012

- 1 Adjustment to Disability Training @ the center 10:00-11:00 AM
- 2 Golden Corral Buffet, 3517 Alta Mere. Cost is \$11.00. Don't forget to bring money to tip the waitress. 1:00-2:15 PM
- 8 Adjustment to Disability Training @ the center 10:00-11:00 AM
- 9 TCU vs. Colorado State @ TCU Daniel Meyers Stadium, 2900 Stadium Dr. Call in advance for cost of tickets. Game starts @ 7:30 PM. Please have your ride scheduled to pick you up by 10:00 PM.
- 15 Adjustment to Disability Training @ the center 10:00-11:00 AM
- 16 BINGO @ the center. Bring a purchased item valued between \$5-\$10. 1:00-3:00 PM
- 20 Center Closed (Presidents' Day)
- 22 Adjustment to Disability Training @ the center 10:00-11:00 AM
- 23 Movie Day @ the center (Popcorn & drinks will be provided) 1:00-3:00 PM
- 29 Adjustment to Disability Training @ the center 10:00-11:00 AM



*Please note that the events listed above are subject to change due to cancellation or lack of consumer interest and participation. Staff will not arrive at out of center events until 1:00PM. The support group only meets at the center on the last 2 or 3 Thursdays each month, depending upon the month.

CALENDAR OF EVENTS



Call us if you need any accommodations such as a sign language interpreter, Braille materials, etc.

December 2011

- 6 Adjustment to Disability Training @ the center 1:30-2:30PM
- 7 Christmas Celebration @ the center (Register with Mavis Ravin 214-630-4796) 9:00-11:00AM
- 13 Basic Computer Classes @ the center (Register with Harvey Spears 214-630-4796) 9:00-11:00AM
- 13 Adjustment to Disability Training @ the center 1:30-2:30PM
- 20 Adjustment to Disability Training @ the center 1:30-2:30PM
- 21 Fun & Games, Snacks at the center (Register with Mavis Ravin) 9:00-11:00AM
- 26 - 30 Center Closed for Christmas Holiday



January 2012

- 2 Office Closed (New Year's Holiday)
- 3 Adjustment to Disability Training @ the center 9:30-11:00
- 3 Basic Computer Classes @ the center (Register with Harvey Spears) 9:00-11:00
- 3 Advocacy Workshop @ the center (Contact Harvey Spears) 12:00-1:00
- 10 Adjustment to Disability Training @ the center 1:30-2:30PM
- 11 Fun & Games, Snacks @ the center (Register with Mavis Ravin) 9:00-11:00AM
- 16 Office Closed (Martin Luther King, Jr.'s Birthday)
- 17 Adjustment to Disability Training @ the center 1:30-2:30PM
- 17 Basic Computer Classes @ the center (Register with Harvey Spears) 9:00-11:00
- 17 Advocacy Workshop at the center (Contact Harvey Spears) 12:00-1:00 PM
- 24 Adjustment to Disability Training @ the center 1:30-2:30PM
- 24 Basic Computer Classes @ the center (Register with Harvey Spears) 9:00-11:00
- 25 Presentation on Medicaid Changes @ the center (Register with Mavis Ravin) 11:00-1:00
- 31 Adjustment to Disability Training @ the center 1:30-2:30PM
- 31 Basic Computer Classes @ the center (Register with Harvey Spears) 9:00-11:00
- 31 Advocacy Workshop @ the center (Contact Harvey Spears) 12:00-1:00 PM



February 2012

- 7 Adjustment to Disability Training @ the center 1:30-2:30PM
- 7 Basic Computer Classes @ the center (Register with Harvey Spears) 9:00-11:00 AM
- 7 Advocacy Workshop @ the center (Contact Harvey Spears) 12:00-1:00 PM
- 14 Adjustment to Disability Training @ the center 1:30-2:30PM
- 15 Disability Rights, presenter Shelly Haynes @ the center 9:00-11:00AM
- 20 Office Closed (Presidents' Day)
- 21 Adjustment to Disability Training @ the center 1:30-2:30PM
- 21 Basic Computer Classes @ the center (Register with Harvey Spears) 9:00-11:00 AM
- 21 Advocacy Workshop @ the center (Contact Harvey Spears) 12:00-1:00 PM
- 22 Documentary on the history of disability: "Lives Worth Living" @ the center (Contact Mavis or Harvey) 9:00-11:00PM



CALENDAR OF EVENTS



Call us if you need any accommodations such as a sign language interpreter, Braille materials, etc.

December 2011

- 6 Adjustment to Disability Training @ the center 9:30-10:30 AM
- 7 "Winter Prep" General Support Group & Crafts @ the center 1:00-3:00 PM
- 13 Adjustment to Disability Training @ the center 9:30-10:30 AM
- 14 "Be Happy" General Support Group @ the center 1:00-2:00 PM
- 20 Adjustment to Disability Training @ the center 9:30-10:30 AM
- 21 Holiday Celebration @ the center 1:00-2:00 PM
- 26-30 Center Closed for Christmas Holiday



January 2012

- 3 Center Closed (New Year's Holiday)
- 4 Adjustment to Disability Training @ the center 9:30-10:30 AM
- 6 "ADA-What is it?" General Support Group @ the center 1:00-2:00 PM
- 10 Adjustment to Disability Training @ the center 9:30-10:30 AM
- 11 "Inside Out" General Support Group @ the center 1:00-2:00 PM
- 16 Center Closed (Martin Luther King Jr.'s Birthday)
- 17 Adjustment to Disability Training @ the center 9:30-10:30 AM
- 18 "Do You have Peers?" General Support Group @ the center 1:00-2:00 PM
- 24 Adjustment to Disability Training @ the center 9:30-10:30 AM
- 25 BINGO @ the center 1:00-3:00 PM
- 31 Adjustment to Disability Training @ the center 9:30-10:30 AM



February 2012

- 1 "How to Beat the BLAHS" General Support Group @ the center 1:00-2:00 PM
- 7 Adjustment to Disability Training @ the center 9:30-10:30 AM
- 8 "Ever Get MAD?" General Support Group & Crafts @ the center 1:00-3:00 PM
- 14 Adjustment to Disability Training @ the center 9:30-10:30 AM
- 15 "Stay Cautious Ideas" General Support Group @ the center 1:00-2:00 PM
- 20 Center Closed (Presidents' Day)
- 21 Adjustment to Disability Training @ the center 9:30-10:30 AM
- 22 Movie Day @ the center 1:00-3:00 PM
- 28 Adjustment to Disability Training @ the center 9:30-10:30 AM
- 29 "Leap Year" General Support Group @ the center 1:00-2:00 PM



CALENDAR OF EVENTS



Call us if you need any accommodations such as a sign language interpreter, Braille materials, etc.

December 2011

- 1 Benefits Counseling: Medicare enrollment, Medicaid, Social Security, Food Stamps, etc. by appointment, Contact Dianne Landen
- 6 Game Day @ the center, (Contact Cynthia) 1:00-3:00PM
- 21 Crafts @ the center (Contact Cynthia)
- 26-30 Center Closed for Christmas Holiday

January 2012

- 2 Center Closed (New Year's Holiday)
- 10 Crafts @ the center (Contact Cynthia) 1:00-2:00PM
- 16 Center Closed (Martin Luther King, Jr.'s Birthday)
- 17 Game Day @ the center (Contact Cynthia) 1:00-3:00PM
- 19 Benefits Counseling: Medicare enrollment, Medicaid, Social Security, Food Stamps, etc. by appointment. Contact Dianne Landen
- 26 Volunteering - "How to Begin" RSVP with Dianne Landen 1:00-2:30PM



February 2012

- 7 Game Day @ the center (Contact Cynthia) 1:00-3:00PM
- 4 Crafts @ the center (Contact Cynthia) 1:00-2:00PM
- 20 Office Closed (Presidents' Day)
- 21 Game Day @ the center (Contact Cynthia) 1:00-3:00PM
- 23 Event Skills Training at the center: Learn how the iPad can accommodate your disability, 9:30-11:30AM. (You may bring your iPad, but its not necessary! Contact Julie Espinoza to RSVP at 972/398-1111 or email jespinoza@reachcils.org.)
- 29 Housing Rights and Responsibilities @ the center (RSVP with Dianne Landen) 10:00-12:00PM



A Word of Thanks to our UNT Practicum Rehabilitation Counseling Students!

REACH of Plano benefitted from numerous hours of research and labor helping our consumers with "Understanding Cultures & Disability in Accepting Social Services" taught by Gloria Hernandez and "How the iPad Accommodates Various Disabilities: Curriculum & Training" taught by Mary Knickerbocker.

REACH of Plano thanks the **independent living skills support volunteers** for contributing over 100 hours of service this winter! Ena Oza, Jackie Quinn, Lorraine Teeter, Robert Petty, Lori Owen, Pete Garza, Laurie Truesdell. We appreciate your interpreting, tutoring, assemblage, and research help!

REACH of Plano thanks the following exhibitors for making our workshops a success this Fall!

For the **JOB Resource Event: Portfolio Services** by Lori Owen., **WIPA** - The Work Incentive Planning & Assistance project, **DARS - DRS** and **DARS -DBS** vocational rehabilitation services, the **Federal Employment Training Center**, **REACH of Dallas - Employment Services**, **Texas Workforce Solutions**, and **Goodwill Industries** - offer opportunities for people with disabilities to become independent & self-supporting.

For the **Veterans with Disabilities Benefits Event**: Department of Veterans Affairs, 1st Heritage Way Adult Day Center, Federal Training Center, Hope Horizon, Lone Star Chapter, Paralyzed Veterans of America, REACH of Denton, Riding Unlimited, RISE Adventures, Adaptive Recreational Sports, Texas Veteran's Commission, Workforce Solutions for North Texas, The Veteran Administration of North Texas, Veterans Homecare of Texas, Waco Veterans Administration Regional Center, Freedom Fighters of Collin County, Amicco, and Alpha Rehabilitation Services.

For the **Dessert & Coffee Pairing** – Mrs. Paula Margeson from REACH, Inc.!

A Special Thanks to all the Photographers who exhibited in the REACH of Plano **Photography Exhibit**. To view the online gallery component, visit the blog section of the REACH website www.reachcils.org.

Check out the Winter Edition of the REACH of Plano Consumers' e-Magazine at www.reachcils.org. Thanks to our contributors, Michael Duff, Robert Petty, Vanessa Smith, Dan Pagel, and Angela Love!

FROM THE DIRECTOR'S DESK



August turned out to be an interesting month for REACH and me personally. August 31 was the end of REACH's 2011 state fiscal year. This simply means that the four grant awards that REACH receives each year from the Texas Department of Assistive and Rehabilitative Services (DARS) to operate the Fort Worth center, the Fort Worth center's adjustment to disability training program, the Plano center, and a small portion the Dallas center's budget must be expended.

During our preparations for closing out fiscal year 2011, we unexpectedly learned that the lease for our Fort Worth office would not be renewed. The new owner of the property wanted to renovate it and move his offices in. With the help of one of the new owner's employees, office space several blocks from our Lake Street address was found. After extensive remodeling by the building's owner and a time intensive move, the REACH of Fort Worth Resource Center on Independent Living opened its doors in Suite 200 at 1000 Macon Street on October 3. Thanks to Robin Lassiter, Assistant Director, and the rest of the REACH of Fort Worth staff, Amira Salas, Karen Williams, and Miaka Palmer, for working diligently to make the move as trouble free as possible. Stop by and visit the staff and our new Fort Worth office when you're in the neighborhood.

In late August, I began experiencing severe pain in my lower left leg. Initially assuming that I was just having a flare-up of my rheumatoid arthritis, I tried slowing down and taking it easy. Unfortunately the pain only got worse so I went to see my orthopedic surgeon after two emergency room visits that failed to identify the problem. After explaining my symptoms, my doctor told me that he suspected that I had a stress fracture in my leg and would have to go to bed and stay off my leg for 6 to 8 weeks so it could heal. A bone scan confirmed my doctor's diagnosis. It was a tough reality to accept – I would have to stay in bed for weeks on end and work from home as my stamina permitted. I'm happy to report that my leg is healing well.

Have a Happy and Safe Holiday Season, Charlotte Stewart

Gov. Perry Makes Appointments to State Independent Living Council

Four new members have recently been appointed to the State Independent Living Council (SILC). The council leads, promotes and advances an independent living philosophy and advocates for the rights of individuals with disabilities.

Shannon Alexander of Bryan is a project coordinator for the Texas A&M University (TAMU) Center on Disability and Development. She is a member of the TAMU Postsecondary Access and Training in Human Services program, and secretary of the Brazos Valley Center for Independent Living Board of Directors. Alexander received a bachelor's degree from the University of North Texas.

Jim Batchelor of Cooper is retired infantry in the U.S. Army. He is a member of Phi Eta Sigma National Honor Fraternity, Military Order of the Purple Heart, Veterans of Foreign Wars, American Legion, Combat Veterans Motorcycle Association, and Disabled American Veterans. He is currently pursuing a master's degree in psychology from Texas A&M University at Commerce.

Crystal Choi of Fort Worth is marketing director and webmaster of ABCFashion.net. She is a former student senator of the Arizona State University (ASU) College of Liberal Arts and Sciences, and past treasurer of the ASU Asian Coalition. Choi received a bachelor's degree from Arizona State University.

Richard Couder of El Paso is a special education teacher in the El Paso Independent School District. He is president of the St. Pius Catholic Church Special Needs Group, and past president of Assistance for Special Kids of El Paso. Couder received a bachelor's degree from the University of Texas at El Paso, and teacher certification from the Alternative-South Texas Educator Program.

Elizabeth Dennis and Lance Hamilos of Austin were appointed as ex officio members representing the DARS—Divisions of Blind and Rehabilitation Services. Elizabeth Dennis is a field specialist manager for DBS and a licensed clinical social worker. She holds a bachelor's degree and master's degree in social work from the University of Texas. Lance Hamilos is a program specialist for DRS. He received a bachelor's degree from Southern Illinois University and a master's degree in counseling for the hearing impaired from Northern Illinois University.

Saul Herrera of Midland and Karen Swearingen of Rowlett were reappointed to serve a second term on the SILC.



FYI

Paula Margeson, Youth Outreach Coordinator/ Grant Writer

Texas Leader in the IL Movement Appointed to Key Administrative Post

On August 30, President Obama announced the appointment of Regina Blye, Executive Director of the Texas State Independent Living Council (SILC), to the Architectural and Transportation Barriers Compliance Access Board. Ms. Blye is a tireless advocate for the rights of people with disabilities and an outstanding role model within the disability community. She is the current Chair of the SILC Congress, the Vice-Chair of the Texas Disability Policy Consortium, and a board member of the Coalition of Texans with Disabilities. Ms. Blye graduated from West Texas A&M University and has a degree in Mass Communications with a focus on Broadcasting and Public Relations. In a press release, President Obama said that our nation will be greatly served by the talent and expertise this appointee will bring to her new role.

Social Security Administration Seeks to Improve Communication With Beneficiaries Who Have Disabilities

SSA has contracted with the Disability Statistics Center at the University of California, San Francisco to learn more about the experiences of people with disabilities who have interactions with the Social Security Administration. Individuals receiving SSI, SSDI, or retirement benefits are eligible to participate in a needs assessment concerning this topic. Phone interviews will be conducted with beneficiaries and will be approximately 30-45 minutes long. For more information, or to participate, please call this toll-free number 1-855-209-9538 or email: alice.wong2@ucsf.edu.

State Warns of Scam Involving Medicaid Card

The Texas Health and Human Services Commission (HHSC) is warning Texans with Medicaid coverage to be aware of a scam where a caller asks them to provide a bank account number and tries to sell them a replacement Medicaid card. The state recently replaced paper Medicaid IDs that were mailed to clients monthly with a plastic **Your Texas Benefits** Medicaid card that looks much like a typical insurance card. People who lose their card can call the state for a free replacement.

HHSC issued the warning after receiving a report of the scam. A Medicaid client reported that a caller told him a replacement of **Your Texas Benefits** card would cost \$50 and asked them for a bank account number. The state is advising Medicaid clients who receive similar calls to report them to the state by calling 1-800-436-6184.

"Please don't give any personal information to these callers," said Texas Medicaid Director Billy Millwee. "There's no charge for a replacement card, and we wouldn't ask for anyone's bank account number. Just make a note of the number the call came from and report it to the state immediately."



REACH's Housing Corner

by Janet Wilkinson, Housing Resource Specialist

To make it easier to request housing information and/or send me an email we have added: [Request More Information](#) on the housing tab on the REACH website. Just click on those words and it will automatically create an email for you to send to me. You may request a housing information packet or just ask a housing question. If you request a housing information packet, don't forget to include your name, phone number, address, city, state and zip code in your message.

I have also added ["Making the Move!!!"](#) to the housing page. This is a very helpful resource tool provided by CIL-NET. A few examples of the resources in the booklet are:

***Accessibility considerations checklist; *What will it cost to Move in?; *Getting along with Your Landlord: How to be a good tenant** I need your help with a small project. I would like to create a frequently asked question /answer section on the housing page of the REACH website. Please email jwilkinson@reachcils.org or call 214-630-4796 and tell me what questions you have and would like to see posted.

I'm constantly adding to my housing database. The database is a listing of private market rate apartments, tax credit properties, senior properties and Section 8 housing. I also have a listing of nursing homes, assisted living facilities, and Intermediate Care Facilities for People with Intellectual Disabilities in the North Texas area. If you would like a copy of this listing and/or have information to pass on to me, you can send me an email by going to www.reachcils.org and selecting the housing tab on the left side of the home page and then clicking on [Request More Information](#).



ADVANCED

Mobility Systems of Texas, Inc.

Since 1987

- KNOWLEDGEABLE SALES
- EXPERT SERVICE
- VAN RENTALS



Customized Mobility Aids including:

- *Van Conversions*
- *Vehicle Hand Controls*
- *Wheelchair & Scooter Lifts*

www.AdvancedMobility.net

2 Locations to Serve You:

Ft Worth: 2110 N. Beach St. 817-429-1273

Mesquite: 3029-A2 East Meadows Blvd. 972-270-7114

Mon-Fri 9 am - 6 pm

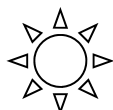
Saturdays 9 am - 2 pm

Member National Mobility Equipment Dealers Association

ADAPTIVE MOBILITY of the SOUTHWEST LLC

Jim Chavez, Mobility Consultant- Proprietor

817-235-0670



Durable Medical Equipment

Ceiling Track Lifts

Pool Lifts

Motion Alarms

Automatic Door Openers

Specifications

Home Modifications

Bathrooms - Kitchens

Custom Ramps - Railing

Door Widening

Special Requests

817-704-3184 - Fax

amofthesw@yahoo.com

Insured - Bonded

**The REACH Resource Centers
on Independent Living
are members of the
Texas Association of Centers
for Independent Living,
the National Council on
Independent Living,
and the Coalition of
Texas with Disabilities.**

REACH FYI ON THE MOVE

By Mel Finefrock

REACH FYI is really booming. Seventy-four youth have participated in the program during the last twelve months. Here is a recap of our most recent activities. The Rockwall independent living academy was followed by two similar events in Plano and Duncanville. Our good friends at DARS paid for us to be able to use the Home Economics room at Williams High and the transition counselor with Duncanville High worked with the school administration to gain approval for use of one of their cooking labs. DARS' generosity didn't end there; transition counselors Lucy Gafford and Brenda Russell pitched in and helped staff the academies. We so much appreciate what they do, both within and outside the four walls of their offices!

At the academies we did lots of fun things; from cooking and crafts to playing games, swimming, and bowling to discovering our strengths, learning about safety, and practicing social skills. We could tell you a list of everything fun that we did at academy, but we thought we'd share a few anonymous comments from the evaluations students filled out at the end of the week. One student said, "I'm happy that I got to do more stuff this week instead of just staying home and sleeping." Another wrote, "I loved having fun and talking to people." Another commented, "I learned things about helping others and making new friends." Many other students reported that they found their inner strengths and learned how to advocate for themselves. They've sure nailed what REACH FYI is all about!

August found us at a Rough Riders baseball game. Although the night was hot, we cooled off with lemon chillers and cheered the home team to victory.

In September we had our second annual movie night. We met at First Community Bank in Richardson, made our own quesadillas and watched *Soul Surfer*. We were all amazed at what a good attitude thirteen-year-old Bethany Hamilton had in the face of a shark attack that left her without one arm. Most of us have always lived with a disability, so it was interesting to gain perspective from someone who is newly disabled. Some of us have even gone and checked out Bethany's book, also called *Soul Surfer*, because we wanted the story straight from the horse's mouth.

We also played a game during which we stood in line like we were going to march. We all closed our eyes except for the person at the back of the line, who was handed a picture with random geometric shapes on it. That person then had to draw what they saw with their index finger on the person's back in front of them, and we went like that all down the line, drawing what we believed the picture to look like. By the time we got to the person in the front of the line, they had to draw the final translation of the image on another piece of paper and compare it with the original. The differences were astounding! It just goes to show how uniquely each of us interprets things.

Toward the end of the month, Duncanville High hosted "Live the Dream" Expo. This is a huge event where most of the organizations and agencies that provide services for youth with disabilities have exhibits and REACH was there. Some of our newest members from South Dallas came to get information from all of the agencies and help out at the REACH booth.

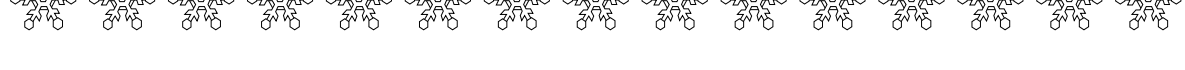
Plans for October include a talent show and Halloween party. REACH FYI needs a permanent meeting place that is basically the same distance from Rockwall, Plano, and Duncanville. If any readers have leads that we could check out, please let Paula Margeson know by calling her at 214-630-4796 or by e-mailing her at pmargeson@reachcils.org.



Bad Weather Closings



Should we experience any icy or snowy weather in the Metroplex during the 2011 - 2012 fall/winter season, watch WFAA — Channel 8 TV to find out if the REACH centers will be closed, opening late, or closing early.





LOWERED



REAR

FLOOR



CUSTOM MODIFICATIONS



FULL SIZE VANS



WHEELCHAIR LIFTS

VANS

ENTRY

VANS

COME VISIT US AT 1500 WESTPARK WAY IN EULESS

ONLINE AT WWW.LIFT-AIDS.COM

OR CALL ANYTIME AT (817)835-0035



WE WORK WITH DARS, MDCP, CLASS, CBA, MHMR,
DADS AND MANY OTHER FUNDING AGENCIES.



JUST A REMINDER

REACH generates additional funds to enhance its mission by participating in the Tom Thumb, Kroger, and Albertsons grocery store donor programs. Each grocery store chain allows its customers to register so that donations go to a nonprofit organization that the customer supports. Then every time a purchase is made, the nonprofit receives credit for the total amount of the purchase. On a quarterly or yearly basis, depending upon the grocery store chain, the chain's home office issues a donation check totaling 1% of all of the purchases credited to the customer's chosen nonprofit's account.

If you and/or your family and friends shop at any or all of these grocery stores and would like to make sure that REACH is able to continue providing services to North Texans with disabilities, please call any of the REACH offices for more information on how to register to participate.





- New & Used Wheelchair Accessible Van Sales
- Lifts, Mobility Seating, and Driving Controls
- 24 Hour Service, Rentals, and much more!
- Serving the DFW Metroplex Area

Call us at 888-939-1010 or email us at
info@unitedaccess.com

Visit us at UnitedAccess.com



Rates for Advertising in the REACH Newsletter

Below are the prices for an advertisement in the *REACHing Out* newsletter. The newsletter is published quarterly in December, March, June, and September. The newsletter is sent/distributed to 3,000+ readers living in the Fort Worth, Dallas, Denton & Plano areas and is available online at www.reachcils.org.

<u>BUSINESS & PROFESSIONAL AD SIZES:</u>	<u>ONE TIME ADS</u>	<u>YEAR ADS</u>
___ Business Card (2" x 3.5")	\$ 25.00	\$ 90.00
___ 1/8 Page (4.25" x 2.75")	50.00	190.00
___ 1/4 Page (4.25" x 5.5")	65.00	250.00
___ 1/2 Page (8.5" x 5.5")	100.00	375.00
___ Full Page (8.5" x 11")	200.00	775.00

If you have any questions, please call Becky Teal, newsletter editor at REACH of Denton at 940-383-1062 or contact her by e-mail at reachden@reachcils.org

Advertising rates are subject to change without prior notice.



Mr. Joe Rivas, M.S., C.R.C.
Attendant Care Training Specialist

A Good Attendant Manual &
A Good Caregiver Manual

For more information visit:
www.joerivashelpseveryone.net

CHOICE medical equipment
www.ChoiceMedicalEquipment.net
940.380.0455

2436 S. I-35 E., Ste. 346
Denton, TX 76205

Words to Live by: *"Living with a disability means extra responsibility."* Tom Schenck

The contents of this newsletter were developed, in part, under grants from the U.S. Department of Education (ED) and the Texas Department of Assistive & Rehabilitative Services (DARS). The contents of this newsletter do not, however, necessarily represent the policies of ED and DARS and you should not assume endorsement by either the federal or state government.

REACH receives a majority of its funding to operate the centers from grants from ED and DARS. REACH of Denton receives 100% of its funding (\$262,943) from ED; REACH of Fort Worth receives 100% of its funding (\$250,000) from DARS; REACH of Dallas receives 95% of its funding (\$503,760) from ED and 5% (\$24,559) from DARS; and REACH of Plano receives 100% of its funding (\$250,000) from DARS.

REACH VETERANS OUTREACH SERVICES

by Michael Thomas



As a wounded veteran it can be very frustrating to be put on the back burner when trying to access benefits. You get the feeling that since you served your country and were wounded for it, your country should show its gratitude for your sacrifice and have organizations ready to assist you.

One such organization that I learned about at a recent benefits fair was the Wounded Warrior Project (WWP). The Wounded Warrior Project exists to honor and empower wounded warriors who incurred service-connected injuries on or after 9/11/01. You will be amazed how many veterans have been wounded in war time.

“For every U.S. soldier killed in World Wars I and II, there were 1.7 soldiers wounded. In Operation Iraqi Freedom and Operation Enduring Freedom, for every U.S. soldier killed, seven were wounded. Combined, there have been almost 42,000 soldiers injured in the two conflicts – nearly 32,000 injured in Operation Iraqi Freedom and nearly 10,000 in Operation Enduring Freedom.”

WWP provides numerous services, including but not limited to: **Family Support Programs, Combat Stress Recovery Programs, Physical Health and Wellness, Campus Services, Warriors to Work, Benefits Services, Peer Mentoring**, and many, many more unique programs designed to meet a wide range of needs of injured service members. All WWP programs are free, but verification of military service is required. For more information, contact the WWP Resource Center at 1-888-997-2586 or email resourcecenter@woundedwarriorproject.org. You can also visit www.woundedwarriorproject.org.

As always, feel free to give me a call at the REACH of Denton center (940-383-1062) with any questions or if you need assistance in applying for any veteran services.

We Are People Too!

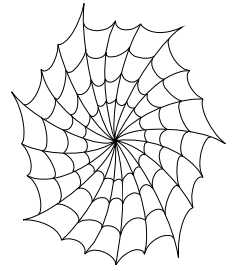
by Violet Hatcher, REACH of Denton Consumer

We may not see or hear or walk as straight as you.
But my friend, you can be sure that we are people too.
It may take a little longer to talk or get things done.
But we take pride in what we do, just like everyone.
We have feelings just like you.

HAPPY NEW YEAR



WEB WORLD



www.va.gov – Primary website for veterans that contains information about all VA benefits: disability compensation, educational assistance, starting a small business, and much more.

<http://www.archives.gov/> – Records unlimited. If you have misplaced any of your records (medical, forms, etc.), this website provides assistance in getting them back. It may take up to 90 days to receive your replacement documents. It is vital to have all your military records in your possession to help expedite your benefit claims.

<http://www.woundedwarriorproject.org/> – Information for veterans who were injured in the line of duty after 9/11. To raise awareness and help the injured is the purpose of this site.

<http://www.veteransadvantage.com> – Veterans Advantage is a national program that partners with corporations that want to do their part to honor and thank all veterans. It gives veterans preferential treatment and discounts on different products and services.

<http://www.dav.org/> – A membership program for service-connected veterans with disabilities. This organization assists with claims, transportation to a VA facility, transition from service to civilian life, and much more.

www.healthwellfoundation.org – Health Well Foundation.

www.panfoundation.org - Patients Access Network Foundation.

CARE to HELP

Honor your loved ones with a gift to the REACH Resource Centers on Independent Living. Donations in memory of a loved one or to celebrate a birthday, anniversary, wedding, Christmas, Valentine's Day, etc. will help REACH continue its work in providing an array of independent living services to North Texas with disabilities.

Enclosed is my contribution of \$ _____

In Memory or Honor of (Name): _____

Check one: Memorial ____ Birthday ____ Anniversary ____ Wedding ____ or
Other (Explain) _____

Send acknowledgement to (Name, Address, City, State & Zip Code):

From (Your Name, Address, City, State & Zip Code):

Make checks payable to REACH, Inc. and mail with this form to 1000 Macon Street, Suite 200, Fort Worth, TX 76102-4527. THANK YOU FOR YOUR FINANCIAL SUPPORT.

**Rehabilitation, Education, and Advocacy
for Citizens with Handicaps Inc.**

**NON-PROFIT ORG.
U.S. POSTAGE
PAID
DALLAS, TEXAS
PERMIT NO. 2010**

**REACH of Dallas
8625 King George Drive, Suite 210
Dallas, Texas 75235-2275**

Return Service Requested

PLEASE HELP US SAVE MONEY!

**If you no longer want to receive this newsletter
or are receiving multiple copies, please call/contact
Robin @ (817) 870-9082, ,
Metro (817) 654-9614 or via e-mail: reachftw@reachcils.org.**

**REACH OF FORT WORTH RESOURCE CENTER ON INDEPENDENT LIVING
1000 MACON STREET, SUITE 200, FORT WORTH, TEXAS 76102-4527
817-870-9082, 817-877-1622 FAX
E-MAIL: reachftw@reachcils.org**

**REACH OF DALLAS RESOURCE CENTER ON INDEPENDENT LIVING
8625 KING GEORGE DRIVE, SUITE 210, DALLAS, TEXAS 75235-2275
214-630-4796 , 214-630-6390 FAX
E-MAIL: reachdallas@reachcils.org**

**REACH OF DENTON RESOURCE CENTER ON INDEPENDENT LIVING
405 SOUTH ELM, SUITE 202, DENTON, TEXAS 76201-6066
940-383-1062 , 940-383-2742 FAX
E-MAIL: reachden@reachcils.org**

**REACH OF PLANO RESOURCE CENTER ON INDEPENDENT LIVING
720 E. Park Blvd. Suite 104, Plano, Texas 75074-8844
972-398-1111 , 972-398-9649 Fax
E-MAIL: reachplano@reachcils.org
REACH's web site address: www.reachcils.org**