



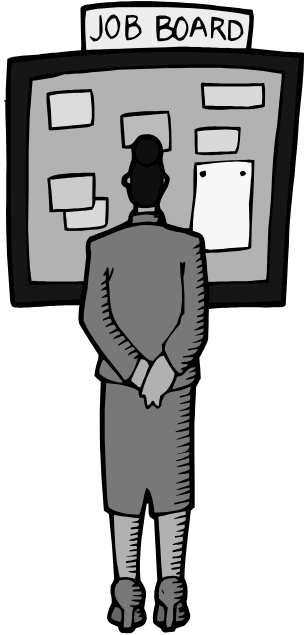
REACHing OUT



HELPING PEOPLE WITH DISABILITIES REACH FOR INDEPENDENCE

December 2008-February 2009 Vol. XII. No. 1 Editor: Becky S. Teal
REACHing OUT is published four times a year in December, March, June, & September at
REACH of Dallas, 8625 King George Drive, Suite 210, Dallas, Texas 75235-2275

Calendar of Events-Fort Worth	2
Calendar of Events-Dallas	3
Calendar of Events-Denton	4
Evercare Ad	5
From The Director's Desk	6
Bad Weather Closing Information	7
Moving to the Community Study	8
STAP Program	8
Meet Mary Sue	9
Advanced Mobility Systems Ad	9
News from REACH of Dallas	10
AmeriCorps ASSET Navigator	11
Lift Aids Ad	12
Happy Retirement to Anne	12
Operation Homefront	13
Thanks to Our E.D.	13
Accurate Tax Service	14
My Best Friend	14
Web World	15



REACH of Dallas Job Club

At the monthly REACH of Dallas Job Club sessions, participants will get innovative information that is career changing and will enhance their quality of life. Below are the dates for the next Job Club meetings.

- Wednesday, January 21, 2009 from 9:00am-12:00pm**
- Wednesday, February 18, 2009 from 9:00am-12:00pm**
- Wednesday, March 18, 2009 from 9:00am-12:00pm**
- Wednesday, April 15, 2009 from 9:00am-12:00pm**
- Wednesday, May 20, 2009 from 9:00am-12:00pm**
- Wednesday, June 17, 2009 from 9:00am-12:00 pm**

For more information, contact Kevan Johnson, Employment Consultant, at REACH of Dallas, 214-630-4796

CALENDAR OF EVENTS FOR REACH OF FORT WORTH

Call us if you need any accommodations such as a sign language interpreter, Braille materials, etc.

December 2008

- 3 Adjustment to Disability Training @ the center 10:00-11:30 AM
- 4 Support Group @ 1:00-3:00 PM
- 10 Adjustment to Disability Training @ the center 10:00-11:30 AM
- 11 Support Group 1:00-3:00 PM
- 17 Adjustment to Disability Training @ the center 10:00-12:00 AM
- 18 Support Group 1:00-3:00 PM
- 24 No Adjustment to Disability Training
- 25-31 Office Closed (Christmas Holiday)



January 2009

- 1-2 Office Closed (New Year's Holiday)
- 7 Adjustment to Disability Training @ the center 10:00-11:30 AM
- 8 Support Group 1:00-3:00 PM
- 14 Adjustment to Disability Training @ the center 10:00-11:30 AM
- 15 Support Group 1:00-3:00 PM
- 19 Office Closed (Martin L. King, Jr.'s Birthday Holiday)
- 21 Adjustment to Disability Training @ the center 10:00-11:30 AM
- 22 Support Group 1:00-3:00 PM
- 28 Adjustment to Disability Training @ the center 10:00-11:30 AM
- 29 Support Group 1:00-3:00 PM
- 30 Office Closed (Staff Training)

February 2009

- 4 Adjustment to Disability Training @ the center 10:00-11:00 AM
- 5 Support Group 1:00-3:00 PM
- 11 Adjustment to Disability Training @ the center 10:00-11:00 AM
- 12 Support Group 1:00-3:00 PM
- 16 Office Closed (Presidents' Day Holiday)
- 18 Adjustment to Disability Training @ the center 10:00-11:00 AM
- 19 Support Group 1:00-3:00 PM
- 25 Adjustment to Disability Training @ the center 10:00-11:00 AM
- 26 Support Group 1:00-3:00 pm



**Please Call Karen at 817-870-9082 to
find out what the scheduled Support
Groups activities are for the months of
December, January, and February.**

CALENDAR OF EVENTS FOR REACH OF DALLAS

Call us if you need any accommodations such as a sign language interpreter, Braille materials, etc.

December 2008

- 2 Adjustment to Disability Training @ the center 9:30-11:00 AM
- 9 Adjustment to Disability Training @ the center 9:30-11:00 AM
- 16 Adjustment to Disability Training @ the center 9:30-11:00 AM
- 16 Holiday Party- See Page 10 for details
- 23 Adjustment to Disability Training @ the center 9:30-11:00 AM
- 25-31 Office Closed (Christmas Holiday)



January 2009

- 1-2 Office Closed (New Years' Holiday)
- 6 Adjustment to Disability Training @ the center 9:30-11:00 AM
- 13 Adjustment to Disability Training @ the center 9:30-11:00 AM
- 19 Office Closed (Martin L. King, Jr.'s Birthday Holiday)
- 20 Adjustment to Disability Training @ the center 9:30-11:00 AM
- 27 Adjustment to Disability Training @ the center 9:30-11:00 AM
- 30 Office Closed (Staff Training)



February 2009

- 3 Adjustment to Disability Training @ the center 9:30-11:00 AM
- 10 Adjustment to Disability Training @ the center 9:30-11:00 AM
- 16 Office Closed (Presidents' Day Holiday)
- 17 Adjustment to Disability Training @ the center 9:30-11:00 AM
- 24 Adjustment to Disability Training @ the center 9:30-11:00 AM

Online Activities: register at www.reachcils.org
(go to the Online Class section)



CALENDAR OF EVENTS FOR REACH OF DENTON

Call us if you need any accommodations such as a sign language interpreter, Braille materials, etc.

December 2008

- 2 Adjustment to Disability Training @ the center 1:30-2:30 PM
- 3 Support Group @ the center 1:00-2:00 PM
- 9 Adjustment to Disability Training @ the center 1:30-2:30 PM
- 10 Support Group & Crafts @ the center 1:00-3:00 PM
- 16 Adjustment to Disability Training @ the center 1:30-3:00 PM
- 17 Holiday Celebration @ the center 1:00-2:00 PM
- 23 Adjustment to Disability Training @ the center 1:30-3:00 PM
- 24 No Group
- 25-31 Office Closed (Christmas Holiday)



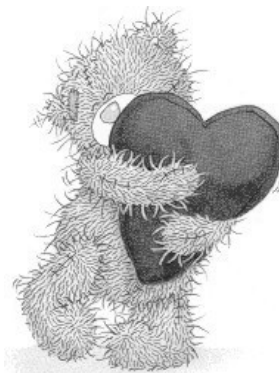
January 2009

- 1-2 Office Closed (New Years' Holiday)
- 6 Adjustment to Disability Training @ the center 1:30-2:30 PM
- 7 Support Group @ the center 1:00-2:00 PM
- 13 Adjustment to Disability Training @ the center 1:30-2:30 PM
- 14 Support Group & Crafts @ the center 1:00-3:00 PM
- 19 Office Closed (Martin L. King, Jr.'s Birthday Holiday)
- 20 Adjustment to Disability Training @ the center 1:30-2:30 PM
- 21 Support Group @ the center 1:00-2:00 PM
- 27 Adjustment to Disability Training @ the center 1:30-2:30 PM
- 28 Bingo @ the center 1:00-2:30 PM
- 30 Office Closed (Staff Training)



February 2009

- 3 Adjustment to Disability Training @ the center 1:30-2:30 PM
- 4 Support Group & Crafts @ the center 1:00-3:00 PM
- 10 Adjustment to Disability Training @ the center 1:30-2:30 PM
- 11 Valentine's Day Party @ the center 1:00-2:00 PM
- 16 Office Closed (Presidents' Day Holiday)
- 17 Adjustment to Disability Training @ the center 1:30-2:30 PM
- 18 Support Group @ the center 1:00-2:00 PM
- 24 Adjustment to Disability Training @ the center 1:30-3:00 PM
- 25 Movie Day @ the center 1:00-3:00 PM





They don't just deserve better care,
they deserve Evercare®.

Getting access to health care coverage isn't always easy. Evercare® health plans make it easier for individuals to access benefits and receive the care they need.

More benefits than Medicare or Medicaid
Evercare contracts directly with Medicare and several state governments to provide benefits for health care services to both Medicare and Medicaid recipients in their communities. In most cases, we are able to provide our enrollees more benefits and coverage than Medicaid and Medicare alone.

Proven track record
Evercare provides health care coverage and services for people who have long-term or advanced illness, are older or have disabilities, whether they live alone, with family or in a

facility. We serve thousands of Medicare and Medicaid recipients across the country.

To help our enrollees get access to health care services we tap into the power of United HealthCare, to build robust provider networks. To date we have agreements with thousands of primary care physicians, specialists, hospitals and skilled nursing facilities across the country.

Maintaining health and independent lives
We honor your work with these special populations and we would like to work with you to help meet their holistic health and care needs. If you would like to learn more about how Evercare can work with you, please give us a call.

To learn more about Evercare, please call:
1-866-481-6220
or visit EvercareHealthPlans.com



Evercare® plans are offered by United HealthCare Insurance Company and its affiliated companies.
©2007 United HealthCare Services, Inc.

EBAD107

FROM THE DIRECTOR'S DESK

by Charlotte A. Stewart



New Board Members

I'm pleased to announce that REACH has a dynamic group of new board members that have joined the existing members in governing the organization. The new board members are Scott Timberman, Jade Kurian, Maria Bean, Laurie Truesdell (former Outreach, Advocacy & ADA Specialist at REACH of Dallas), Carla Forman, Greg Plants and Bob Boudreaux. The other board members are Dave Sheppard, Chris Klotz, Gordon Meredith, Barbara Nwaigbo, Michelle Dooley, Steve Carlson, John Bramblitt, Penny Acrey, Myrna Gorchoff, Wayne Everett, Abu Yilla, Steve Prenger, Sylvia Hodgins, and Michael Layton.

Mike Love with Atelier Design Associates in Arlington has joined former board member Patricia (Pat) Nehr on the REACH Emeritus Council. The members of the Emeritus Council use their knowledge, expertise, talents, and skills in assisting the board of directors and employees in realizing the organization's vision and achieving its goals.

New Employee

Mary Sue Welch began working at the Dallas center on October 20 as the Outreach, Advocacy & ADA Specialist. She brings a lot of experience to this job after working 27 years for the Social Security Administration, a majority of that time as a claims representative. She told me she enjoys interacting with people, so she should be very effective in educating people with disabilities and the general public about REACH's services and activities.

Goodbyes

We are saying goodbye to two departing employees: Anne Ancy, Information and Referral Specialist at the Fort Worth center, and Dee Jacobi-Edwards, part time Relocation Specialist at the Dallas center. Anne is retiring on December 31 after 17 years on the job. Dee is resigning effective 11/13 after 8 months on the job to go back to work full time as a physical therapy assistant. The other REACH employees and I will miss working with these two dedicated employees. We wish them the best of luck in the future.

Donors

With a portion of the generous \$30,000 grant that the Hillcrest Foundation awarded to REACH last year, employees were able to assist 15 nursing home residents move successfully into the community. These funds were used to cover expenses for items such as medications, groceries, furniture, linens, pots and pans, utility payments, and assistive devices.

The Rees-Jones Foundation recently awarded a \$12,000 grant to REACH to support the youth outreach activities at the Dallas center.

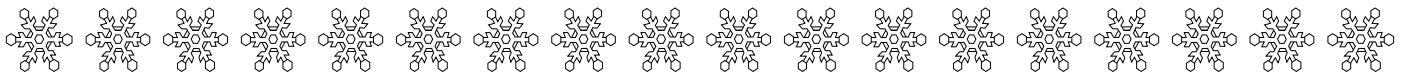
TACIL

The Texas Association of Centers for Independent Living (TACIL) has just released its 2007 annual report. The report highlights the service figures for the 19 centers for independent living that are members of the organization. In fiscal year 2007 (10/1/06-9/30/07), the member centers of the organization handled a combined total of 64,379 requests for information and referral. The member centers also provided the following services to the number of people with disabilities listed:

Individual advocacy assistance - 3,153	Personal assistance services – 561
Assistive technology – 944	Preventative services – 638
Housing & home modifications assistance – 2,150	Recreational opportunities - 981
Independent living skills training – 2,961	Transportation assistance – 1,001
Peer counseling/peer support – 7,295	Vocational assistance – 1,422

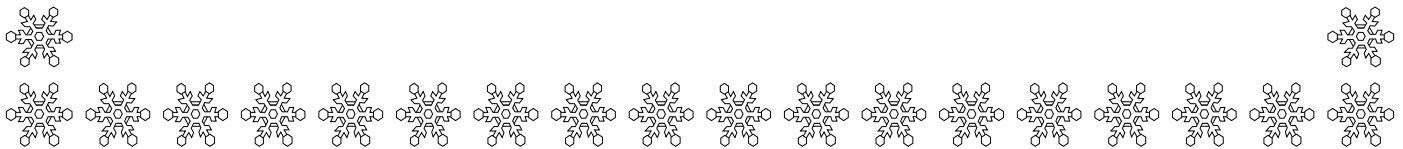
Best Wishes for a Safe and Happy Holiday Season!!!

The REACH Board and Staff Wish Our Readers a Merry Holiday Season.



BAD WEATHER CLOSINGS

Should we experience any icy or snowy weather in the Metroplex during the 2008 - 2009 fall/winter season, watch WFAA - Channel 8 TV to learn if the REACH offices will be closed, opening late, or closing early.



The contents of this newsletter were developed, in part, under grants from the U.S. Department of Education (ED) and the Texas Department of Assistive & Rehabilitative Services (DARS). The contents of this newsletter do not, however, necessarily represent the policies of ED and DARS and you should not assume endorsement by either the federal or state government.

REACH receives a majority of its funding to operate the centers from grants from ED and DARS. REACH of Denton receives 100% of its funding (\$185,736) from ED; REACH of Fort Worth receives 100% of its funding (\$229,559) from DARS; REACH of Dallas receives 90% of its funding (\$383,248) from ED and 10% (\$45,000) from DARS.

MOVING TO THE COMMUNITY STUDY



Have you moved out of an institution and into the community with the help of staff at Advocacy, Incorporated? Are you willing to discuss your experiences about your move?

Researchers at the Texas Center for Disability Studies at the University of Texas at Austin want to hear your story! We are conducting interviews to find out more about your recent move. The interview will last about an hour and you will be compensated \$50.00 for your time.

What do you need to do if you want to participate?

- ✓ Call the Texas Center for Disability Studies toll free at: 1-866-291-1990. The TTY number is 512-232-0762.
- ✓ You will speak to a member of our research team; if you need to leave a message, we will call you back. We will ask you a few questions to be sure you qualify for the study. We will also answer any questions that you may have and set up a time when we can come to a location of your choice to do the interview.
- ✓ All information you tell us will be kept confidential.
- ✓ After you complete the interview, we will give you a \$50.00 gift card.

This research project is funded by the Texas Council for Developmental Disabilities, Advocacy, Incorporated, and the Texas Center for Disability Studies and has been approved by the Internal Review Board of the University of Texas at Austin.

STAP Program

Dear Texas Resident:

I am reaching out to explain a wonderful State of Texas law that can help many REACH newsletter readers. The Specialized Telecommunications Assistance Program (STAP) is a law that was passed about 10 years ago. The law offers FREE telephone assistance to any Texas resident, rich or poor, having difficulty using the telephone because of a disability. Disability, not age or income, qualifies a person for this program.

The Deaf Action Center is nonprofit organization with an established STAP Outreach Center based in Dallas. This office is responsible for the following 19 counties: Collin, Cooke, Dallas, Denton, Ellis, Erath, Fannin, Grayson, Hood, Hunt, Johnson, Kaufman, Navarro, Palo Pinto, Parker, Rockwall, Somervell, Tarrant, and Wise.

Remember this wonderful law provides FREE PHONES AND RING DEVICES to any Texas resident that has difficulty using a telephone because of a disability.

For more information or to request a free phone, contact Ashley Kuehne at 214-521-0407 or via e-mail at akuehne@deafactioncentertexas.org.

Meet Mary Sue

Hello to everyone receiving this newsletter. Although I know that you are sad to see Laurie Truesdell leave REACH, because she is such a wonderful resource of information, I have come to make a place for myself and I'm hoping you are ready to welcome me and help me learn. My name is Mary Sue Welch. I began working at REACH on October 20th. My disability is blindness. My background has been with the Social Security Administration where I worked for 27 years. After leaving that agency, the thing I found I missed most was contact with both my coworkers and customers. I'm really a people person, so I am looking forward to meeting all of you very soon.

Some of the things I enjoy doing for fun are: playing scrabble and other board and card games, reading legal thrillers and other mysteries, and cooking. My husband is also blind and works in the Business Enterprises of Texas Program through the Department of Assistive and Rehabilitative Services – Division for Blind Services. I have one daughter who is a teacher of children with visual impairments in Houston.

So here's how I need your help! Do any of you have an idea about how an advocacy group might work? If so, what would such a group look like? Let's talk.... My e-mail address is mwelch@reachcils.org and my phone number is 214-630-4796. I look forward to working with you.



www.advancedmobility.net

Ft Worth: 2110 N. Beach St – 817-429 1273

Email: goadvanced@aol.com

Mesquite: 3029A2 E. Meadows Blvd – 972-270 7114

Email: mesquite@advancedmobility.net

Dealer for: Braun, Bruno, Eldorado, EMC, IMS, MPS, Ricon, VMI, and most major Mobility Equipment suppliers

Let us show you the new GM- Chevrolet Entervan from Braun. It's now available with the In-Floor Ramp. We also have the Chevrolet or Pontiac lowered floor van by Eldorado.



For a very nice ride, come and test drive the new Toyota-Sienna Rampvan from IMS. We have them in stock for immediate delivery at competitive prices.

We do full-size van conversions with raised roof, lowered floor, lift installations and all types of special steering and control systems.

We are open from 9AM to 6PM, Mon – Fri & 9AM to 2 PM on Sat



News from REACH of Dallas

By Julie Espinoza, On-Line Skills Training Specialist

Many Thanks to The Vendors at Our Recent Assistance Exhibit!

Absher's Mobility, UCP, Easter Seals, Dallas Metrocare Services, Southlake Medical, and the Area Agency on Aging of Dallas joined consumers, employees, and other agency professionals to share information about their services and/or products for people with disabilities.

In Remembrance of Laurie Genola

Laurie was a long time friend and consumer of REACH of Dallas. She passed away in October and will be missed by so many people. Laurie had many physical complications due to her disability and was a role model showing the power of a positive attitude and service to others no matter what she was dealing with herself. She was a volunteer, friend, wife, advocate and kind person to every single person she came into contact with. She never drew attention to herself and always donated her time and talent to many different projects. She was a peer counselor, an actress in a REACH ADA film, a pianist for school kids listening to disability etiquette songs, and a food bank helper among other things. We will miss you Laurie.

Points to Remember:

Check out our new online advice column: **Ask Mary Sue!** If you need advice on a life issue as a person with a disability, see what Mary Sue thinks! The column opened for business in mid November at **www.reachcils.org**.

Adjustment to Disability Support Group Meetings

Every Tuesday, 9:30 -11:00AM at the center. Call Julie to schedule an appointment to enroll if you would like to participate!

In office skills training is available for **one-on-one help** to become more independent in the community. Call Julie at 214/630-4796 to discuss your independent living skills training needs!

Group Activity

Tuesday, December 16th **Holiday Party!** Bring \$8 for a Jason Deli box lunch and an ornament for a gift exchange. Call Julie by Friday, 12/12 at 214/630-4796 to make your reservation.

Your Help is Needed. Now that we've just finished a major election, Advocacy, Inc.'s Help America Vote Act Project wants to know how the voting process worked across Texas. Please take the brief survey at:

http://www.surveymonkey.com/s.aspx?sm-hft7l5uovFmU1lksGwJNnw_3d_3d

and tell us about your experience with the voting process. We are working now to assist state and local policy makers understand what worked and what did not. Your feedback will help us ensure that every eligible voter with a disability is able to cast their vote in future elections.

AmeriCorps ASSET Navigator Program

Do you like helping people reach their full potential? Do you want to make a difference in the life of others? If you answered yes, then the AmeriCorps ASSET Navigator program may be just for you!

Qualified applicants are being sought for a new AmeriCorps*State ASSET Navigator program. ASSET stands for "Active Service Solutions for Economic Transition." ASSET helps people with disabilities overcome barriers to living independently in their communities. AmeriCorps members, called Navigators, will work directly with individuals and their families to develop goals towards greater independence. These goals include three areas of focus: Assistive Technology, Money Management, and Housing.

Activities will include, but will not be limited to: establishing short and long-term financial goals, offering training on budgeting and other areas of financial literacy, offering assistance in securing affordable, accessible integrated housing for rent or for purchase, offering first time homebuyer training and helping locate and obtain appropriate assistive technology. Navigators will also research local community resources that may be useful in assisting individuals to work towards their goals of independence.

Positions are being filled in eight communities throughout Texas: Austin, Corpus Christi, Fort Worth, Houston, San Antonio, and Waco/Belton. Full time ASSET Navigators will be required to complete 1,700 hours of training, receive a total living allowance of \$11,400 (about \$950 a month), be eligible for health benefits, and child care assistance, and after successful completion of their hours, receive an education award of \$4,725 to use to go to school or to pay off qualified student loans.

Required Qualifications

- Interest in empowering people with disabilities as they work towards independent living
- Strong interpersonal communication skills
- Interest in mentoring/teaching
- Ability to work independently or on a team
- Self starter with good follow through
- Basic computing and Internet research skills
- High school diploma, GED or intent to complete high school or obtain a GED

Preferred Qualifications

- College degree or equivalent life experience
- Experience teaching or mentoring
- Previous experience working with people with disabilities or life experience with a disability
- Previous experience in personal finance management, housing, assistive technology, group facilitation and /or community development
- Language skills in Spanish and/or American Sign Language (ASL)

Interested people should contact Dana at dana@ucptexas.org for instructions on how to apply. An online application must be completed in order to be considered for an interview.

NEW PRODUCTS



REAR ENTRY DROP FLOOR MINI-VAN

With its manual door and ramp system, this is the most reliable and cost effective minivan conversion available. Low profile ramp provides good visibility, seating for up to 6 passengers and meets applicable FMVSS standards for Dodge Grand Caravans, 2005-2008.



LIFT AIDS, INC. is proud to announce the all new custom **OVER VEHICLE LIFT (O-V-L)**

This self-contained, roof-mounted power lift is designed to lift a person out of their wheelchair and set them inside the vehicle without robbing the vehicle of precious seating space.

With its 600# lifting capacity and a custom docking device, both the wheelchair and occupant can be loaded into certain vehicles without the need for additional modifications.



1500 Westpark Way * Euless, TX 76040
www.lift-aids.com * info@lift-aids.com
817-835-0035 * 1-800-351-LIFT (5438)

“Helping People Help Themselves Since 1968.”



Happy Retirement to Anne



Best of Luck to Anne Ancy at our REACH of Fort Worth office. After 17 years, Anne is retiring on December 31. I want to thank Anne so much for all of the articles she has given me for the newsletter for the past seven years that I have been the newsletter editor. I'll miss all the great items that Anne sent me for each edition. The other REACH employees and I wish you a long, relaxing, and fulfilling retirement. **Becky**



**Supporting our troops and helping
the families they leave behind**

How We Help - Operation Homefront provides aid to families struggling not only with emergencies, but also the problems of everyday life. Existing programs include:

Emergency Aid - Food, baby care items, vehicle donation and repair.

Computer Program - Allows children and spouses to stay in touch with their loved one.

Financial Assistance Program - Crises such as illness, homelessness and death.

Furniture Program - Donated household and baby furniture; working order appliances.

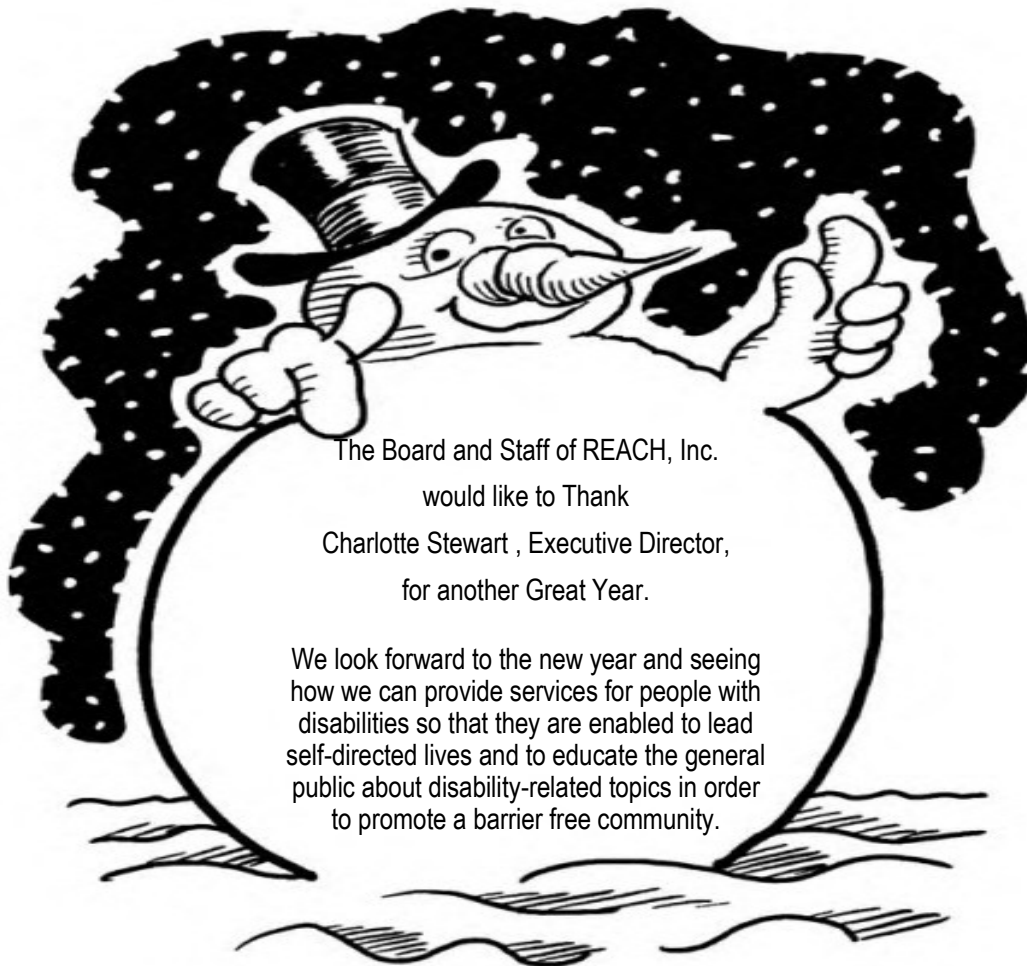
Moving - Providing physical labor for families when a service member is deployed.

Social Outreach - Adopt-a-family, Thanksgiving/holiday baskets, back-to-school supplies.

Operation Homefront provides emergency assistance and morale to our troops, to the families they leave behind, and to wounded warriors when they return home.

Operation Homefront - Texas Chapter, 17305 IH 35N, Suite 105, Schertz, TX , 78154, Phone: 210-659-8039

Toll Free Number: 1-800-779-5921, Fax: 210-651-4739 - <http://www.operationhomefront.net>



The Board and Staff of REACH, Inc.

would like to Thank

Charlotte Stewart , Executive Director,

for another Great Year.

We look forward to the new year and seeing how we can provide services for people with disabilities so that they are enabled to lead self-directed lives and to educate the general public about disability-related topics in order to promote a barrier free community.

ACCURATE TAX SERVICES
QUALITY THAT IS ON TARGET
714 NORTH GALLOWAY, SUITE 106
MESQUITE, TEXAS 75149
214-545-8219
CONTACT: RITA HROBOWSKI-BODUNDE

OPEN 7 DAYS A WEEK

RAPID ANTICIPATION LOAN (RAL)

INSTANT RAPID ANTICIPATION LOAN (IRAL)

FREE E-FILE

STUDENT, SENIOR AND PUBLIC SERVICE DISCOUNTS

SPECIAL DISCOUNTS FOR REACH CONSUMERS AND EMPLOYEES

INDIVIDUAL TAXPAYER IDENTIFICATION NUMBER (ITIN)

REFERRAL PROGRAM

TAX TIPS: If it's work-related, DEDUCT IT!

Most people know that you can claim deductions for up to \$300 in work-related expenses without having the receipts to prove it, but there are many other juicy deductions available.

- Up to \$150 in eligible laundry, claims can be deducted without a receipt, even if you are over the \$300 no-receipt threshold.
- Home workers may be able to claim a deduction for heating, cooling, lighting and depreciating your office equipment or professional library, but you need to keep a diary of the hours worked at home for at least four weeks to substantiate the claim.
- Education expenses for study directly related to your field can be claimed as deductions, but not if the study is to help you obtain new qualifications in a different field.

20% DISCOUNT OFF
TAX PREPARATION FEE ONLY WITH THIS COUPON
FOR REACH CONSUMERS AND EMPLOYEES

My Best Friend (Part 3 of 3)

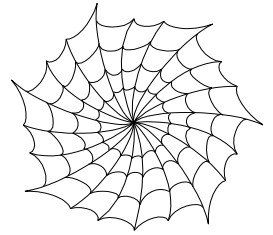
by La Charles

Now the hours and days are near when my best friend seems far off from me. I mean there was a time when you saw me and you would also see my best friend. Now my best friend and I are not around each other as much as we used to be. My wife would give me a smile when she knew I missed my best friend. It's now been a while since I hung around with my best friend. I know I can't turn back the hands of time, but I sometimes wish I could go back to the days when my best friend was always with me.

P.S. Can you guess who or what my Best Friend is? Call me at 214-519-4349 if you know.



WEB WORLD



www.economicrecovery.gov - Resource for the American people to find help to keep their homes, find jobs and protect their savings.

www.dol.gov/dol/topic/disability/index.htm - Disability resources.

<http://www.seniorresource.com/texas.htm> - Resources for seniors by state.

<http://www.neads.org/index.php> - Dogs for the deaf & people with other disabilities.

<http://www.lungusa.org> - American Lung Association.

<http://www.signingonline.com/demo/dictionary/index.html> - Signing on line.

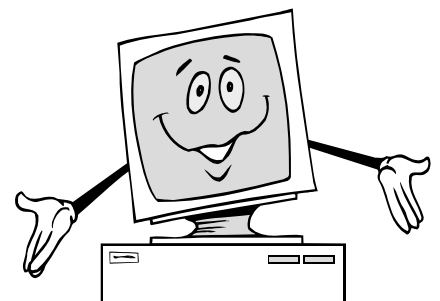
<http://www.lupus.org> - All about LUPUS.

http://www.ssa.gov/disability/Adult_StarterKit.pdf - What you should know before you apply for Social Security disability benefits.

<http://www.ccgd.org/211.htm> - 211 Information website.

<http://blvd.com/> - Resources for people with disabilities.

www.access-able.com - Traveling with disabilities.



You have achieved success if you have lived well, laughed often, and loved much.

Author Unknown

**REACH OF DALLAS RESOURCE CENTER ON INDEPENDENT LIVING
8625 KING GEORGE DRIVE, SUITE 210, DALLAS, TEXAS 75235-2275
214-630-4796 VOICE, 214-630-5995 TTY, 214-630-6390 FAX**

E-MAIL: reachdallas@reachcils.org

**REACH OF FORT WORTH RESOURCE CENTER ON INDEPENDENT LIVING
1205 LAKE STREET, FORT WORTH, TEXAS 76102-4501**

817-870-9082 VOICE, 817-654-9614 METRO,

817-870-9086 TTY, 817-877-1622 FAX

E-MAIL: reachftw@reachcils.org

REACH OF DENTON RESOURCE CENTER ON INDEPENDENT LIVING

405 SOUTH ELM, SUITE 202, DENTON, TEXAS 76201-6066

940-383-1062 VOICE & TTY, 940-383-2742 FAX

E-MAIL: reachden@reachcils.org

REACH's web site address: www.reachcils.org

**Rehabilitation, Education, and Advocacy
for Citizens with Handicaps Inc.**

**REACH of Dallas
8625 King George Drive, Suite 210
Dallas, Texas 75235-2275**

Return Service Requested

PLEASE HELP US SAVE MONEY!

If you no longer wish to receive this newsletter
or are receiving multiple copies, please call/contact
Robin @ (817) 870-9082, (817) 870-9086 TTY or
Metro (817) 654-9614 or e-mail: reachftw@reachcils.org.

NON-PROFIT ORG.
U.S. POSTAGE
PAID
DALLAS, TEXAS
PERMIT NO. 2010